



Now Accepting Surf Reservation Requests

It's time! Requests for 2025/2026 reservations are now being accepted. Reservations will be processed by a random lottery for all surf season units beginning at 8:00am PST on **Thursday, January 16, 2025** for all priority (BLUE) week holders.

We encourage you to use the online submission option at <https://uqr.to/WCR2526> (also linked on the Wave Crest website). Or you may send in the unit request form included in this mailing.

Non-priority (RED) will begin after the priority units are completed. Reservation confirmations will be emailed once the lottery is complete. We strongly suggest providing a minimum of five (5) dates (more if you are RED) on your request form to improve your chances of confirming your desired week. Grand Pacific Vacation Services, GPVS, will call you if none of your choices are available. If GPVS is unable to reach you, a reservation will be assigned as close to your requests as possible, a voicemail will be left, and the lottery will continue on. If you do not receive your reservation by February 14, 2025, please call the GPVS Contact Center at (888) 477-6967.

If you own multiple weeks of the same unit type *and* color, the reservation request forms for these weeks can be **treated as a single lottery entry**. It is the responsibility of the Owner to indicate their preference for this in the **Special Needs** section of the form. Also, please take advantage of the **Comments** section on the form, to include additional information to help us get you the best reservation possible.

If you own multiple weeks that are *not* same type *and* color, the forms for these weeks shall be separated and each will be treated as their own unique lottery entry. If you would like them arranged a certain way (concurrent, sequential, or widely separated), please indicate on the **Special Needs** section on the Reservation Request on each Form.

After submission, Owners will be sent a confirmation via email stating their "reservation form has been received". Please allow five (5) days after mail date to receive this confirmation. If you do not receive submission confirmation within five (5) days of your submission, please contact Grand Pacific Vacation Services at (888) 477-6967.

Requests received after 8:00am PST, the day of the lottery are considered late and will be handled at the end of the lottery process. To ensure your requests are received by January 16, 2025, please be sure to send requests to Grand Pacific Vacation Services by January 9, 2025.

For additional information on the Reservation Lottery process including access to a detailed video on how to fill out the reservation form, a download link for additional forms, and the link to the new **Online Submission option**, please visit the Wave Crest Resort website at www.wavecrestresort.com.

Please note that the following Unit Request Form is not used as part of the online submission option. If you intend to utilize the online submission option: please visit <https://uqr.to/WCR2526> or follow the links on the Wave Crest website.

Two (2) Convenient Ways to submit your written request option:

1. **(MAIL)** Fill out the provided reservation form(s) and **mail** to
GRAND PACIFIC RESORTS
ATTN: GPVS CONTACT CENTER
5900 PASTEUR COURT, SUITE 100
CARLSBAD, CA 92008
2. **(EMAIL)** Fill out the provided reservation form(s) and **email** to GPVSpecialist@gpresorts.com

Need assistance? We're here to help Monday - Saturday 8:00am to 5:00pm PST at (888) 477-6967.

NOTE: Ensure you store the following number in your mobile phone, so you recognize inbound calls from: GPVS (888) 477-6967



Wave Crest Resort 2025/2026 Reservation Calendar

The 2025/2026 reservations will be processed by random lottery for all surf season units beginning at 8:00am PST on Thursday, January 16, 2025 for priority BLUE week holders. RED week lottery will begin upon completion of the BLUE group. Requests received after 8:00am PST the day of the lottery are considered late and will be handled at the end of the lottery process. To ensure your requests are received by January 16, please be sure to send request to Grand Pacific Vacation Services by January 9, 2025. For additional information on the Reservation Lottery process including access to a detailed video on how to fill out the reservation form, a download link for additional forms, and the link to the **Online Submission option**, please visit the Wave Crest Resort website at www.wavecrestresort.com

For Surf Season Full Week Use Periods 2025/2026 Use Year (September 12, 2025 – July 19, 2026)

The Use Periods for These Suites Begin and End: Friday	
Studio:	7B, 12B, 14C, 16C, 19C, 21C
One Bedroom:	4A, 6A, 8B, 10B, 28F, 30G
Two Bedroom:	5A*, 22E, 23E, 26F
<i>Note: 5A has one (1) bathroom only and is upstairs</i>	
The Use Periods for These Suites Begin and End: Sunday	
Studio:	1A, 13B, 15C, 17C, 18C, 20C
One Bedroom:	2A, 3A, 9B, 11B, 29G, 31G
Two Bedroom:	24E, 25E, 27F

All Reservations will be processed randomly, from either Red or Blue groups. Reservations will begin according to the following timelines:

Unit Type & Color	Date Reservations Begin
BLUE (Priority):	Thursday, January 16, 2025 at 8:00am PST
RED:	Upon completion of BLUE group

1. The written reservation request forms may be submitted by email and mail only. (Telephone, FAX and walk-in reservations will not be accepted.)

Attn: GPVS Contact Center
MAIL 5900 Pasteur Court, Suite 100
 Carlsbad, CA 92008

EMAIL GPVSpecialist@gpresorts.com

2. Please note that the following Unit Request Form is not used as part of the online submission option. If you intend to utilize the online submission option: please visit <https://uqr.to/WCR2526> or follow the links on the Wave Crest website.

3. Week #26 & #27 are dedicated Maintenance Weeks in 2026 in which the resort will fully close for deep cleanings and maintenance work.

4. Please fill out one form per week owned. If you require additional forms, visit GrandPacificResorts.com/Reserve or WaveCrestResort.com and follow the download link.

a. If you own multiple weeks of the same unit type *and* color, the reservation request forms for these weeks can be **treated as a single lottery entry** and when they are pulled they will all be assigned at the same time. It is the responsibility of the Owner to indicate their preference for this in the **Special Needs** section of the form. Also, please take advantage of the **Comments** section on the form, to include additional information to help us get you the best reservation possible.

b. If you own multiple weeks that are not same type *and* color, the forms for these weeks shall be separated and each will be treated as their own unique lottery entry. If you would like them arranged a certain way (concurrent, sequential, or widely separated), please indicate on the **Special Needs** section on the Reservation Request on each Form. Also, please take advantage of the **Comments** section on the form, to include additional information.

5. Please provide a minimum of five (5) dates on your request form to improve your chances of confirming your desired week and indicate if week or unit preference is desired. If no indication is made, we will assume week preference. We will call you at the number(s) provided on your reservation form if none of your choices are available. If we are unable to reach you, we will assign a reservation as close to your preference as possible, a voicemail will be left, and we will continue with the lottery.

NOTE: Ensure you store the following number in your mobile phone, so you recognize inbound calls from: GPVS (888) 477-6967

2025/2026 Wave Crest Resort Calendar

Season	Year	Wk#	Friday Start	Sunday Start		
Turf	2025	1	July 18 - July 25	July 20 - July 27		
		2	July 25 - August 1	July 27 - August 3		
		3	August 1 - August 8	August 3 - August 10		
		4	August 8 - August 15	August 10 - August 17		
		5	August 15 - August 22	August 17 - August 24		
		6	August 22 - August 29	August 24 - August 31		
		7	August 29 - September 5	August 31 - September 7		
		8	September 5 - September 12	September 7 - September 14		
Surf	2025	9	September 12 - September 19	September 14 - September 21		
		10	September 19 - September 26	September 21 - September 28		
		11	September 26 - October 3	September 28 - October 5		
		12	October 3 - October 10	October 5 - October 12		
		13	October 10 - October 17	October 12 - October 19		
		14	October 17 - October 24	October 19 - October 26		
		15	October 24 - October 31	October 26 - November 2		
		16	October 31 - November 7	November 2 - November 9		
		17	November 7 - November 14	November 9 - November 16		
		18	November 14 - November 21	November 16 - November 23		
		19	November 21 - November 28	November 23 - November 30		
		20	November 28 - December 5	November 30 - December 7		
		21	December 5 - December 12	December 7 - December 14		
		22	December 12 - December 19	December 14 - December 21		
		23	December 19 - December 26	December 21 - December 28		
		24	December 26 - January 2	December 28 - January 4		
		2026	25	January 2 - January 9	January 4 - January 11	
			26	Maintenance Weeks		
			27	Maintenance Weeks		
			28	January 23 - January 30	January 25 - February 1	
			29	January 30 - February 6	February 1 - February 8	
			30	February 6 - February 13	February 8 - February 15	
			31	February 13 - February 20	February 15 - February 22	
			32	February 20 - February 27	February 22 - March 1	
	33		February 27 - March 6	March 1 - March 8		
	34		March 6 - March 13	March 8 - March 15		
	35		March 13 - March 20	March 15 - March 22		
	36		March 20 - March 27	March 22 - March 29		
	37		March 27 - April 3	March 29 - April 5		
	38		April 3 - April 10	April 5 - April 12		
	39		April 10 - April 17	April 12 - April 19		
	40		April 17 - April 24	April 19 - April 26		
	41		April 24 - May 1	April 26 - May 3		
	42		May 1 - May 8	May 3 - May 10		
	43		May 8 - May 15	May 10 - May 17		
	44		May 15 - May 22	May 17 - May 24		
	45		May 22 - May 29	May 24 - May 31		
	46		May 29 - June 5	May 31 - June 7		
	47		June 5 - June 12	June 7 - June 14		
	48		June 12 - June 19	June 14 - June 21		
	49		June 19 - June 26	June 21 - June 28		
	50		June 26 - July 3	June 28 - July 5		
	51		July 3 - July 10	July 5 - July 12		
	52		July 10 - July 17	July 12 - July 19		



2025/2026 Reservation Request

Account #: _____

Type of Unit: _____

Owner Name: _____

Priority Color: _____

Request Unit

(Please list in order of preference for appropriate unit type)

<p>Studio Fri-Fri: ___7B ___12B ___14C ___16C ___19C ___21C Sun-Sun: ___1A ___13B ___15C ___17C ___18C ___20C <i>Note: All C Units have Murphy Beds</i></p>	<p>1 Bedroom Fri-Fri: ___4A ___6A ___8B ___10B ___28F ___30G Sun-Sun: ___2A ___3A ___9B ___11B ___29G ___31G</p>
<p>2 Bedroom Fri-Fri: ___5A* ___22E ___23E ___26F Sun-Sun: ___24E ___25E ___27F <i>Note: 5A has one (1) bathroom only and is upstairs</i></p>	<p>It is more important to fulfill my requested (select one): <input type="checkbox"/> Date/Week Number <input type="checkbox"/> Unit Number</p>

Request Week

Week Choice (In Order of Preference)	Preferred Check-in Day (Please select one)	Wave Crest Week Number (Use WC Reservation Calendar. Do not enter RCI Week #)	Check-in Date
1 st Choice	<input type="checkbox"/> Friday <input type="checkbox"/> Sunday		
2 nd Choice	<input type="checkbox"/> Friday <input type="checkbox"/> Sunday		
3 rd Choice	<input type="checkbox"/> Friday <input type="checkbox"/> Sunday		
4 th Choice	<input type="checkbox"/> Friday <input type="checkbox"/> Sunday		
5 th Choice	<input type="checkbox"/> Friday <input type="checkbox"/> Sunday		
6 th Choice	<input type="checkbox"/> Friday <input type="checkbox"/> Sunday		
7 th Choice	<input type="checkbox"/> Friday <input type="checkbox"/> Sunday		
8 th Choice	<input type="checkbox"/> Friday <input type="checkbox"/> Sunday		
9 th Choice	<input type="checkbox"/> Friday <input type="checkbox"/> Sunday		
10 th Choice	<input type="checkbox"/> Friday <input type="checkbox"/> Sunday		

Special Needs

I own multiple same unit size/color weeks:

Handle all like units as a single lottery entry
 Handle each unit as a separate lottery entry

Please book my weeks:
 all for the same dates
 back to back
 spread out through the year

I own multiple weeks that are NOT same size/color.

Please book my weeks:
 all for the same dates
 back to back
 spread out through the year

Other – Please note on comments page.

(Owner Signature)

(Date)

(Co-Owner Signature)

(Preferred Phone #)

(Email Address)

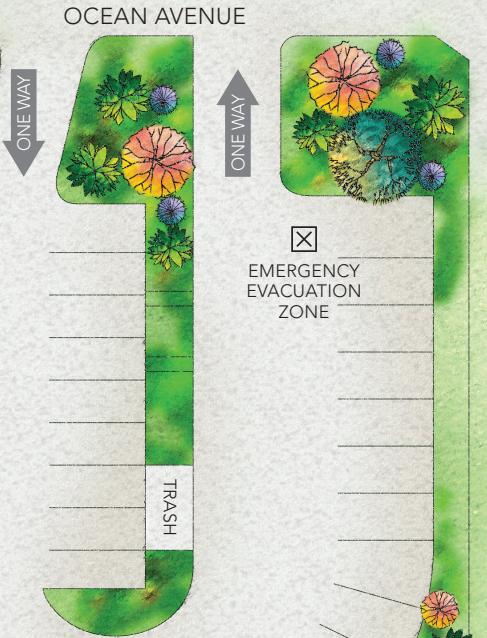
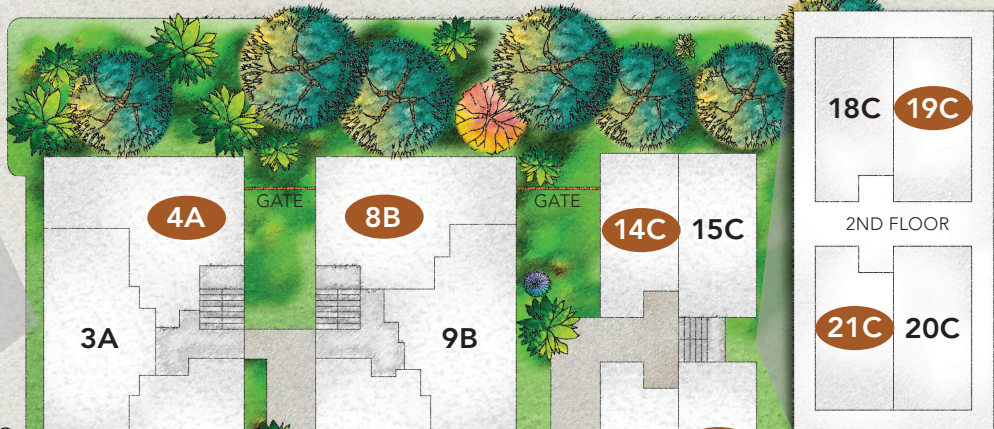
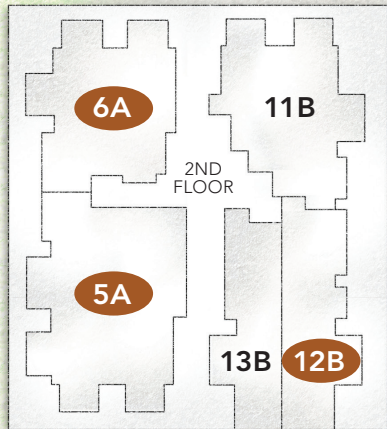
(Secondary Phone #)

Completed forms may be delivered to Grand Pacific Vacation Services (GPVS) using any of the two (2) methods:

Email: GPVSpecialist@gpresorts.com

Mail: Attn: GPVS Contact Center, 5900 Pasteur Court, Suite 100, Carlsbad, CA 92008

NOTE: Ensure you store the following number in your mobile phone, so you recognize inbound calls from: GPVS (888) 477-6967



PARKING

ENTRY GATE

PARKING

LAUNDRY/VENDING LOUNGE

FRONT DESK

RESTROOMS

BBQ

SPA

POOL

25E

24E

23E

22E

28F

27F



26F

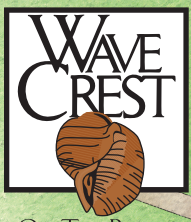
30G

29G

31G

SEAGROVE PARK

RESERVATIONS:
 FRIDAY TO FRIDAY
 SUNDAY TO SUNDAY



ON THE BEACH
 IN DEL MAR

1400 OCEAN AVENUE
 DEL MAR, CA 92014
 (858) 755-0100

OCEAN AVENUE

ONE WAY

ONE WAY

TRASH

ENTRY STAIRS

GATE

GATE

GATE



Grand Pacific Resorts
ATTN: GPVS Contact Center
5900 Pasteur Court, Suite 100
Carlsbad, CA 92008